

SENSING

Remote sensor-to-Human ●●●



LABS

# SENSING LABS GENERAL PRESENTATION

JUNE 2016



“TRANSFORMING REAL WORLD INTO DATA AND PROVIDING THOSE DATA TO CUSTOMERS”



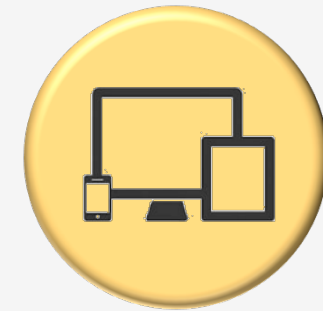
Information capture



Data transfer on internet



Data warehouse



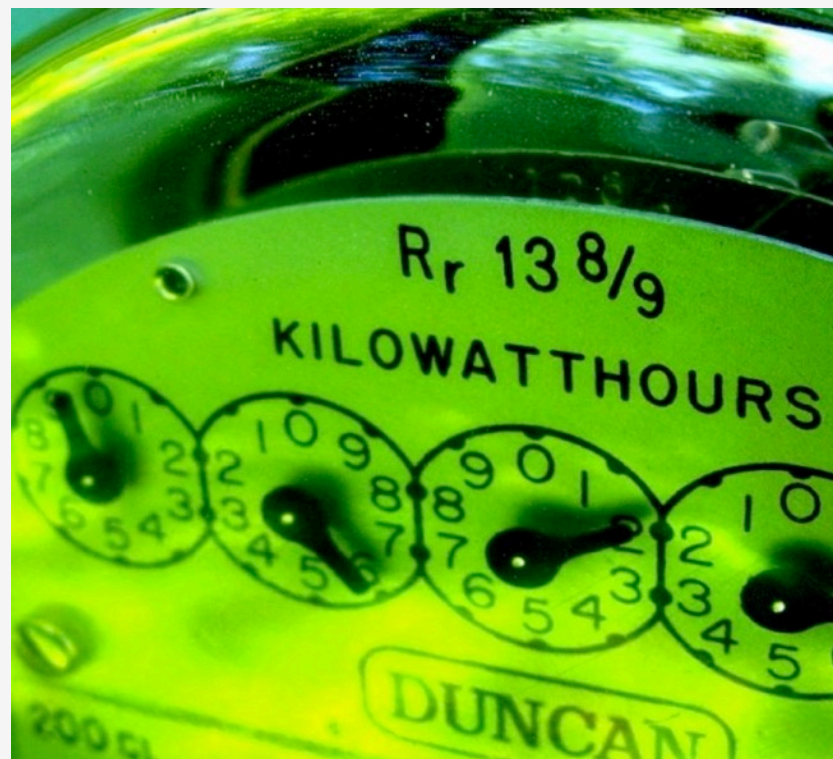
Applications & services métiers

# FOCUS #1

## Water & Energy Data Services



Building Energy efficiency

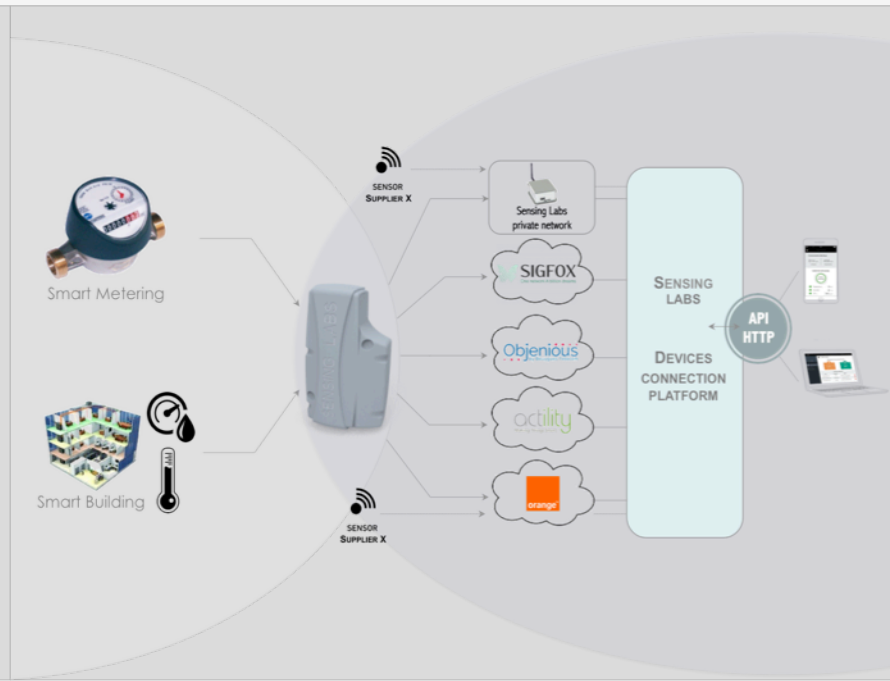
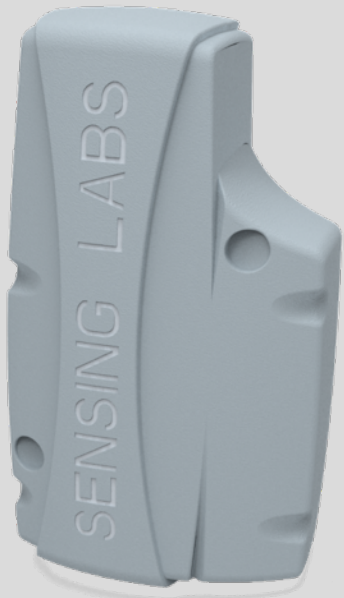


Smart metering

# Unlimited data access fee

**1€** /month/meter

**Includes:**  
Hardware  
Communication cost  
Data Warehouse access



# SOLUTION

**Cost + Life duration + Reliability**  
**(Save 30-50 %)**



Smart Metering



Smart Building



ANY METERS AND SITES COMPATIBLE

**Communication cost**  
**(Save up to 50%)**



Sensing Labs private network



SENSOR SUPPLIER X

MULTI-OPERATORS



API HTTP



"ONE SERVICE POINT"

**Integration time**  
**Divided by 2 to 5**

# Customers & partners

## Distributors



## Facility Mgt



## Integrators



## Manufacturing



## Operators



LA POSTE



# EXPERTISE + SYNERGY+ EXPERIENCE



**LUDOVIC CALLIER**

**SALES DIRECTOR**

51 years

20 years in  
Legrand group  
(100 M€ revenue)

**YANN GUIOMAR**

**CEO**

47 years

Former Managing  
Director of Coronis

**THIERRY CHOMAUD**

**PROJECTS DIRECTOR**

38 years

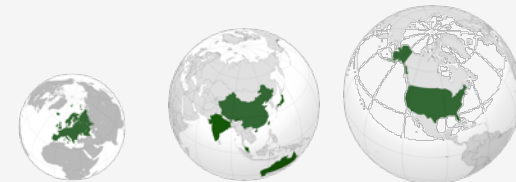
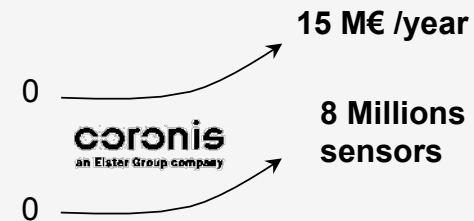
10 years+ IT experience,  
Projects director  
for Coronis

**NICOLAS DEJEAN**

**CTO**

37 years

10 years+ in wireless  
sensors systems



**TRACK RECORD**



**THANKS FOR YOUR ATTENTION**